

High performance  
br... and the tool

# New catalogue



CATALOGUE N° 14

# TOPRING

New products for 2013

## Series 01

### Professional Pressure Indicator Tester Kit

- All-in-one pressure tester ideal for checking pressure drop between network connection and tool
- Large pressure gauge for easy pressure reading



p.25

## Series 06

### SICOAIR

#### Threaded drop connection

- Makes drop installation fast and easy
- No need to plan drop a before main line installation



p.52

### SICOAIR

#### Installation tools for threaded drop connections

- Allows installation of threaded drop connections and twin take-off couplings



p.53

### SICOAIR

#### Threaded nylon reducer

- Specifically designed for use with the female branch T (BSPP) connector

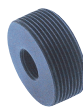


p.56

### SICOAIR

#### Threaded aluminium reducer

- New size



p.56

### SICOAIR

- See the video which demonstrates the rapidity of installation of a SICOAIR system compared to a traditional system



p.33

### Compressed air distribution systems

- Useful sales tools to promote compressed air distribution systems



p.81

## Series 07

### QUIK LINE

#### Green Aluminum pipe

- Perfect for Nitrogen networks
- Length 4m (13 ft)
- Size 22 mm (3/4 in)



p.69

#### Hook for wall mounting

- Diameter (mm) 40, 50, 63

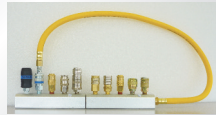


p.77

## Series 20

### Quick Coupler selection at a glance

- New 1/4 INDUSTRIAL quick couplers display



p.552

p.101, 104, 121 and 133

### SLIM Quick Couplers

- Compact, lightweight, automatic
- **UNIQUE** Universal 3 in 1
- **AUTOMAX** 1/4 INDUSTRIEL
- **AUTOMAX** ARO 210
- **AUTOMAX** ULTRAFLO
- Sets couplers and plugs available



### Triple hose splitter kit

- Manifold of brass, flat and heavy duty



p.109

## Series 20•23•31

p.105, 119 and 132

### QUIKSILVER Quick Couplers

- Improved product: high pressure and easier to connect



## Series 25

### Quick Couplers with easy grip

- **MAXQUIK** 3/8 TRUFLATE (25.844 -1/4 NPT / 25.864 -3/8 NPT)



p.125

## Series 97

p.129

### ULTRAFLO Demo kit

- Glass beads run through the connection to demonstrate the superior air flow offered by ULTRAFLO quick couplers



## Series 32

p.144

### Nylon tubes

- Diameter in inches: 330 ft rolls (up to 500 ft in the catalog # 12)
- Diameter Metric: 100 m rolls (up to 150 m in the catalog # 12)



## Series 35

p.147

### Polyurethane tubing

- New color: translucent blue
- Size 330' / 100m



## Series 36

p.148

### Rechargeable battery-operated automatic pipe cutter

- Can cut tubes or plastic pipes with a diameter up to 42 mm



## Series 39•40•42

p.150 and 154

### Thread and tube size full scale chart

National Pipe Thread Taper & Taper Pipe Thread					
Thread Type	Size	NPT 1/8	NPT 1/4	NPT 3/8	NPT 1/2
Thread	Size	1/8	1/4	3/8	1/2
Thread	Size	1/8	1/4	3/8	1/2

## Series 40

p.159

### Miniature check valves

- For tubes with outside diameter 1/4 and 5/32



### Miniature nylon ball valves

- These items have changed code. They are now positioned in series 40 (was in series 65 in the Catalog # 12)



p.161

## Series 44•46

p.167 and 169

### MAXFIT 44 (Inch size)

- New size for tubes with an outside diameter 1/2 in



### MAXFIT 46 (Metric size)

- New sizes for tubes with an outside diameter 8, 10 and 12 mm
- Available for many metric push-in fittings



## Series 41

p.174

### Reducing bushing

- New sizes 1/4(F) x 1/4(M), 2(M) x 3/4(F), 2(M) x 1(F), 2(M) x 1-1/2(F)



### Garden Hose Fittings

- New size (M)X(M) and (M)X(F)



p.181

### Reusable hose fittings for polyurethane hoses

- For series 14, 17, 74, 78



p.181

## Series 47

p.183

### Composite manifolds

- New models with manual drain



### Aluminum manifolds

- New size 1 BSPP



p.183

## Series 48

p.188

### Medium pressure two ear clamps

- New size Oetiker



## Series 50

p.209, 215 and 221

### MODULAIR

#### New spare parts available



## Series 51

p.229, 233, 238 and 243

AIRFLO

New spare parts available

AIRFLO

3D demo board  
for series 51


p.234

AIRFLO

450-500 - 3/4 and 1 NPT  
Combined unit F/R + L  
(gauge included)

- With semi-automatic and automatic drain trap



p.240

AIRFLO

450-500 - 3/4 and 1 NPT  
F/R (gauge included)

- With semi-automatic and automatic drain trap



p.241

AIRFLO

600  
Filter and regulator

- For port size diameters 1-1/4, 1-1/2 to 2 NPT



p.244 and 245

AIRFLO

200 - 300  
STAINLESS STEEL

- 200 size : 1/4
- 300 size: 3/8 and 1/2



p.246 to 249

## Series 52

p.252 to 261

HIFLO 2

2 1/4, 3/8 and 1/2

- The filter and coalescing filter HIFLO have been enhanced to provide greater air flow (SCFM)
- Lubricators type micro-mist can now carry oil over a larger distance. Size 1/2 now available



HIFLO

1 1/4 and 1 1/2

- New size regulators (gauge included) with greater pressure



p.267

## Series 53

AIRFLO

Compressed air filters

- New size 1/2 available



p.281

## Series 54

p.290

NEVADA disiccant  
air dryer system  
(30 SCFM)

- The code 54.660 was replaced by the code 54.661 (new design)
- New parts have been added, while maintaining all of the old model



Shutdown Checklist

- Incorporating this shutdown checklist into your maintenance program will allow to identify defective components in order to maximize your air network!



p.543

## Series 58

p.312

HOSEGUARD

- Improved page with more details



## Series 60

p.333

OSHA regulations

- Complete rules on safety tools and equipment operated by compressed air

AIRPRO

Blow guns

- Offer full display boxes of 25 blowguns



p.341

## Series 61

p.361

AIRPRO

Brakes bleeder

- Size 1.2L (with or without fittings for filling)
- Demonstration video [TOPRING.com](http://TOPRING.com)



## Series 62

p.379

3 in 1 air manifold

- New model in brass



Air Manifold 2 in 1

- New model with 1/4 (M) NPT inlet and 1/4 (M) NPT outlet



p.379

Hose whip kit  
with coupler and plug

- New model with 30° swivel



p.380

Ergonomic air tool  
connection

Usefull connection techniques, use of ergonomic couplers and use of an air tool lubricator



p.381

## Series 63

p.384 and 385

Extended dual foot air chucks for large  
bore valve

- (63.620C) CLOSED
- (63.625C) OPEN


Open clip-on air chuck  
(straight chuck)

- New model 1/4 (F) NPT (63.203)



p.385

Standard tire gauges

- Section improved (indicator rods shown)
- New model swivel foot large bore tire gauge (63.610)



p.387

Professional  
dial tire gauge

- 3.5 inch swivel gauge, 10-170 PSI (63.585C)



p.388

Professional  
inflator gauge

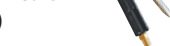
- 0-90 PSI (63.691)



p.390 and 391

Professional inflator  
gauge for heavy vehicle

- 0-170 PSI (63.692)


Pistol grip  
dial inflator gauge

- Models with clip-on air chuck (63.711) or dual foot air chuck (63.711)



p.392

AIRPRO

Inflator gauge

- Improved product
- 0-174 PSI with 2 air chuck included (63.651)



p.393

Professional digital  
tire inflator gauge

- 0-218 PSI (63.661)
- Clip-on air chuck



p.394

Bayonet  
Inflator gauge

- New model with air chuck and attachment (63.603C)



p.395

Inflator gauge  
with magnifying  
glass window

- New model with clip-on air chuck (63.657C)



p.396

Inflator gauge

- Former model 63.659 becomes 63.659C with clip-on air chuck



p.396

## Series 65

p.407

**General purpose brass ball valves (F)(F)**  
• New size 1 BSPP



## Brass mini ball valves TOPFIT

p.409

• The former codes (65) were replaced by codes 40 series



## Nylon ball valves

p.410

• New metric sizes



## Series 68

p.429

**Air amplifiers with positionable hose**

• Model modified and new codes



## Series 69

p.441

**Food grade air tool oil**  
• New



## Series 70

p.449

**FLEXhybrid**  
• New flexible technopolymer air hose



## Series 74

p.455

**FLEXAIR**  
• Air hose also available with non-swivel fittings



## Series 78

p.458

**TOPMAX**  
• Polyurethane air hose with flexible Rubber strain relief guard



## Series 79

p.466

**TopReel HD - Double arm Industrial Heavy Duty Hose Reels • NEW DESIGN**

• Now available with 3/8 and 1/2 THERMOFLEX, SUPERFLEX, TOPFLEX and AIRFLEX air hoses



## TopReel

p.467

**Industrial Medium Duty Hose Reels**  
• Now available with 1/4, 3/8 and 1/2 FLEXhybrid, MAXAIR, SUPERFLEX, TOPFLEX and AIRFLEX air hoses



## MAXREEL

p.468

**Professional Hose Reels**  
• Now available with 3/8 and 1/2 FLEXhybrid air hoses and 1/4, 3/8 and 1/2 MAXAIR air hoses



## FLEXReel

p.469

**Professional Compact Hose Reel**

- 3/8 x 50 ft x 1/4 (M) NPT with FLEXhybrid hose
- Auto rewind hose reel automatique
- Light and compact design
- High quality, impact resistant polymer drum for durable use



## Rolair

p.473

**Professional Compact Hose Reel**

- 1/4 x 27 ft x 1/4 (M) NPT with FLEXhybrid hose
- Light and compact auto rewind hose reel



## PolyReel • EASYFLEX

p.476

- 1/4 x 100 ft x 1/4 (M) NPT
- Light and easy to carry
- 360° swivel base with ball bearings to extend service life of reel



## Retracto

p.477

**Industrial water hose reel**

- 1/2 x 65 ft x 3/4 (M) NPT with PVC hose
- New design



## Series 80

p.482

**MINIATURES air control valves**

- New models 3 way / 2 positions single solenoid valves



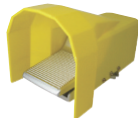
## OPTIMA air control valves

p.497

**3 way / 2 position**

- New foot valves

- New valve controller



## OPTIMA air control valves

p.499

**5 way / 2 position**

- New valve controller



**5-way / 3 position**

- New valve controller

## OPTIMA air control valves

p.500

**5 way / 2 position**

- New valve controller



**5-way / 3 position**

- New valve controller

## OPTIMA air control valves

p.501

**5 way / 2 position**

- New foot valves



## OPTIMA air control valves Manifold base kit

p.505

- New blanking plates



## OPTIMA air control valves

p.506

**5 way / 2 and 3 position**

- New models for port size 1/4 and 3/8
- Stainless Steel



## Full colour poster

p.525

- This poster illustrates a large variety of push-in fittings and pneumatic accessories. It's a practical reference guide!



## Series 85

p.529

**Precision in-line flow control valves**

- New models 1/4 to 1/2



## Quick exhaust valves

p.531

- New models 1/8 to 3/4



## In-line check valve

p.532

- New models with female thread type



## Double pressure valve

p.533

- New model "AND" logic fonction



## Two-hand anti tie-down safety unit

p.534

- New model "AND" type



## Series 86

p.541

**Speed control mufflers**

- New thread size 1 (M) NPT



## Highflow pneumatic silencers

p.542

- New thread sizes 1-1/4 and 1-1/2

